

Top Stories This Week

- ≈ NALCO cuts aluminium prices after global fall.
- ≈ TCS beats ONGC to become most-valued company
- ≈ Hind Copper to invest Rs 533 crore in Khetri Copper Complex.
- ≈ Bharti Airtel to sell 5% stake to Qatar Foundation for \$1.26 bn.
- ≈ SMS Pharma buy back at maximum Rs 300/share.
- ≈ HUL open offer at Rs 600/shr opens June 21, closes in July 4.
- ≈ NMDC examining proposals to acquire coal mines in South Africa.
- ≈ Aban Offshore has signed contract for the deployment of the jack-up rig Deep Driller 7 offshore Mexico
- ≈ Tata Motors to raise SGD 300-400 mn from Singapore debt market.
- ≈ HPCL buys Nigeria's Qua Iboe oil grade from BP.
- ≈ Aban Offshore to consider fund raising on May 29.
- ≈ March IIP at 2.5% vs 0.6%.
- ≈ WIPRO: SEBI okay share transfer to trust to meet public shreholding norms.
- ≈ Tata Comm launches IPX+ enabled network with Qatar firm.
- ≈ IMG to decide on NHPC divestment, Govt Keen on Divesting 10% In NHPC In FY14.
- ≈ Tata Power to develop hydro projects for \$700 mln in Georgia.

Weekly Indices Change

Index	Close	P. Close	Chg. (%)
SENSEX	20143	19575	2.90
NIFTY	6113	5944	2.84
MIDCAP	6542	6376	2.60
SMLCAP	6199	6032	2.77
METAL	8845	8786	0.67
OIL&GAS	8842	8706	1.56
AUTO	11279	10831	4.14
TECK	3657	3563	2.64
BANKEK	14649	14183	3.29
IT	6050	5881	2.87
FMCG	6891	6577	4.77
HC	8931	8759	1.96
PSU	6898	6808	1.32
CD	7693	7421	3.67
POWER	1775	1770	0.28
CG	9999	9964	0.35
REALTY	1918	1902	0.84

Global Indices

DOW	15118	14974	0.96
NASDAQ	3436	3378	1.72
FTSE	6624	6521	1.58
NIKKEI	14607	13694	6.67
HANGSENG	23321	22690	2.78

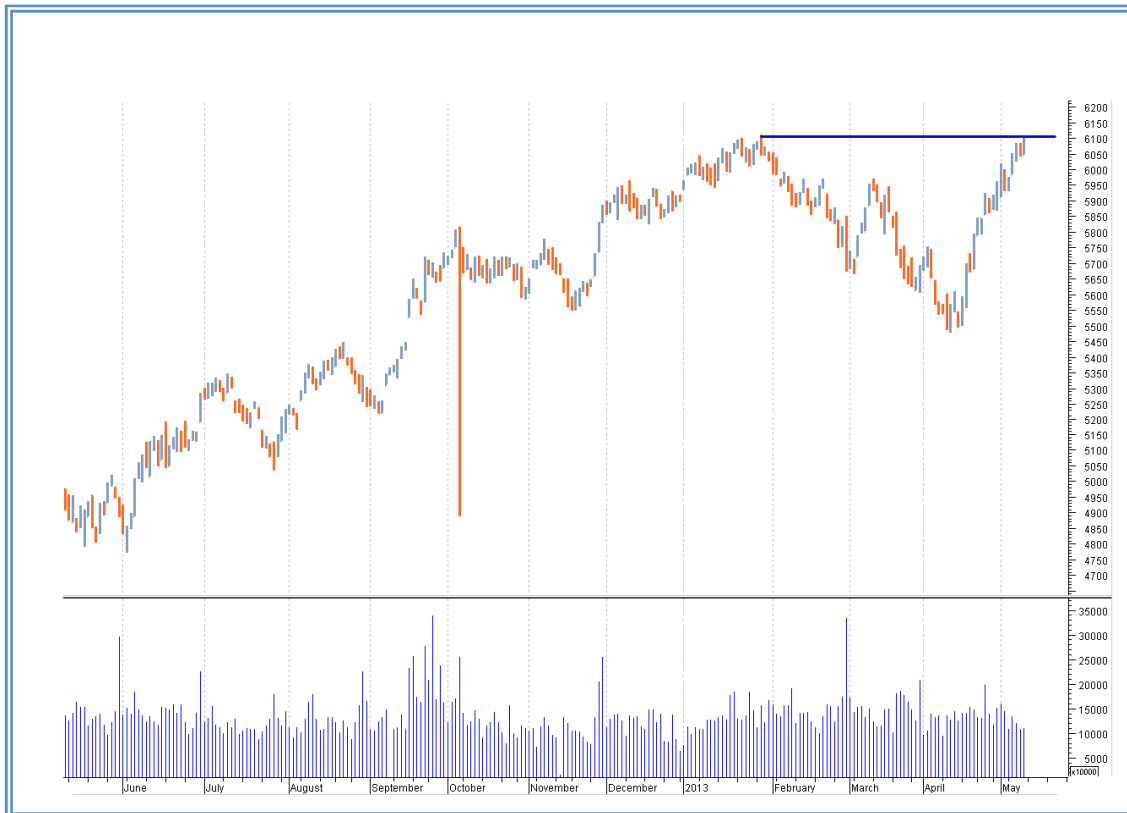
Top Gainers Weekly

Scrip	Price	% Chg
GODFREY PHILIPS	3313	37.43
APTECH LTD.	60.90	36.39
NDTV	97.80	35
TVTODAY NETWORK	91.15	30.31
MMTC	264.85	23.13

Top Losers Weekly

Scrip	Price	% Chg
MICRO TECHNO	10.25	36.53
ELDER PHARMA	250	33
TULIP TELECOM LTD	16.35	22.51
KHAITAN ELECTRIC	68.45	18.51
AANJANEYA LIFECARE	74.70	17.55

Nifty Corner



Support & Resistance						
S3	S2	S1	Nifty	R1	R2	R3
5850	5900	6000	6107	6150	6250	6350
Moving Averages						
20DMA		50DMA		100DMA		200DMA
5845		5780		5875		5705

Market Commentary

Gains in world stocks and strong inflow from foreign institutional investors (FIIs) sent key benchmark indices surging, with the barometer index, the S&P BSE Sensex hitting over 14 week high above the psychological 20,000 mark. The CNX Nifty reached over 2-year closing high above the psychological 6,100 mark. The market gained in four out of five trading sessions in the week For this week Nifty likely to trade in the range between 6200 – 6350 in the upper side and 5900 – 5850 in the lower side.

Stocks at 52 wk High

Scrip	Cmp
APOLLO HOSPIT.	945
BERGER PAINT	230.15
DR REDDYS LAB	2091.70
ITC	354.15
LUPIN	766.20

Stocks at 52 wk Low

Scrip	Cmp
ELDER PHARMA	250
MICRO TECH	10.25
LUMAX AUTO TECH.	126.40
JUBLFOOD	1030
NILKAMAL	156.80

FII Activity

Date	Figures in crore
06-05	+897.46
07-05	+655.21
08-05	+967.99
09-05	+662.88
10-05	+544.11
NET	+3727.65

DII Activity

Date	Figures in crore
06-05	(540.83)
07-05	(729.17)
08-05	(669.08)
09-05	(476.69)
10-05	(502.32)
NET	(2918.09)

Weekly Stock Idea

Scrip	B/S	Cmp	Tgt
HINDALCO	B	106	112
DISHTV	B	67	72
TITAN	B	288	297
ICICIBANK	B	1167	1195
HATHWAY	B	289	305

Buy on dips & Sell on rise with Stop-loss of 3%

Volume Breakout Stocks

Scrip	Cmp
WHEELS	792.80
IFB INDUSTRIES	85.80
ELDER PHARMA	250
DREDGING CORP.	249.10
RCF	42.45

Week Ahead

BOARD MEETING THIS WEEK:

13 May: HILLOCK AGRO, CHEMFALKAL, SUNCLAYLTD, XCHNGING

14 May: ACCELYA, INDIA INFRASPACE, LAKSHMI OVER

15 May: KESORAMIND

17 May: BATAINDIA, PINEANIM

VISIT US AT: WWW.INDIRATRADE.COM

Disclaimer

This report is for private circulation within the Indira Group. This report is strictly confidential and for information of the selected recipient only and may not be altered in any way, transmitted to, copied or distributed, in part or in whole, to any other person or to the media or reproduced in any form. This report should not be construed as an offer or solicitation to buy or sell any securities or any interest in securities. It does not constitute a personal recommendation or take into account the particular investment objectives, financial situations, or any such factor. The information, opinions estimates and forecasts contained here have been obtained from, or are based upon, sources we believe to be reliable, but no representation of warranty, express or implied, is made by us to their accuracy or completeness. Opinions expressed are our current opinions as of the date appearing on this material only and are subject to change without notice.